

SOUTHFIELD SCHOOL



Recruitment Pack
SEN Teaching Assistant

Letter from the Headteacher

Looking for a challenge? Have a desire to work in an environment where you can make a 'real' difference to the lives of young people? If so, Southfield School could be the place for you.

We are a family where no two students are alike, and no two members of staff are alike. Our pupils all have challenging communication difficulties/ASD and associated conditions.

Our school vision is to support all children, so they thrive during their time at Southfield School and are prepared socially, emotionally, and academically for their next steps in education. Collaboration with parents and carers and the entire multi-disciplinary team who support our students is vital and key to our success.

Everyone plays a part in the future of our students with staff skills being utilised in order that we have a huge range of expertise, to support our students and families.

We are looking for like-minded, resilient staff who are passionate and who can work in a team.

Come and join us and make a difference to the lives of children every day.

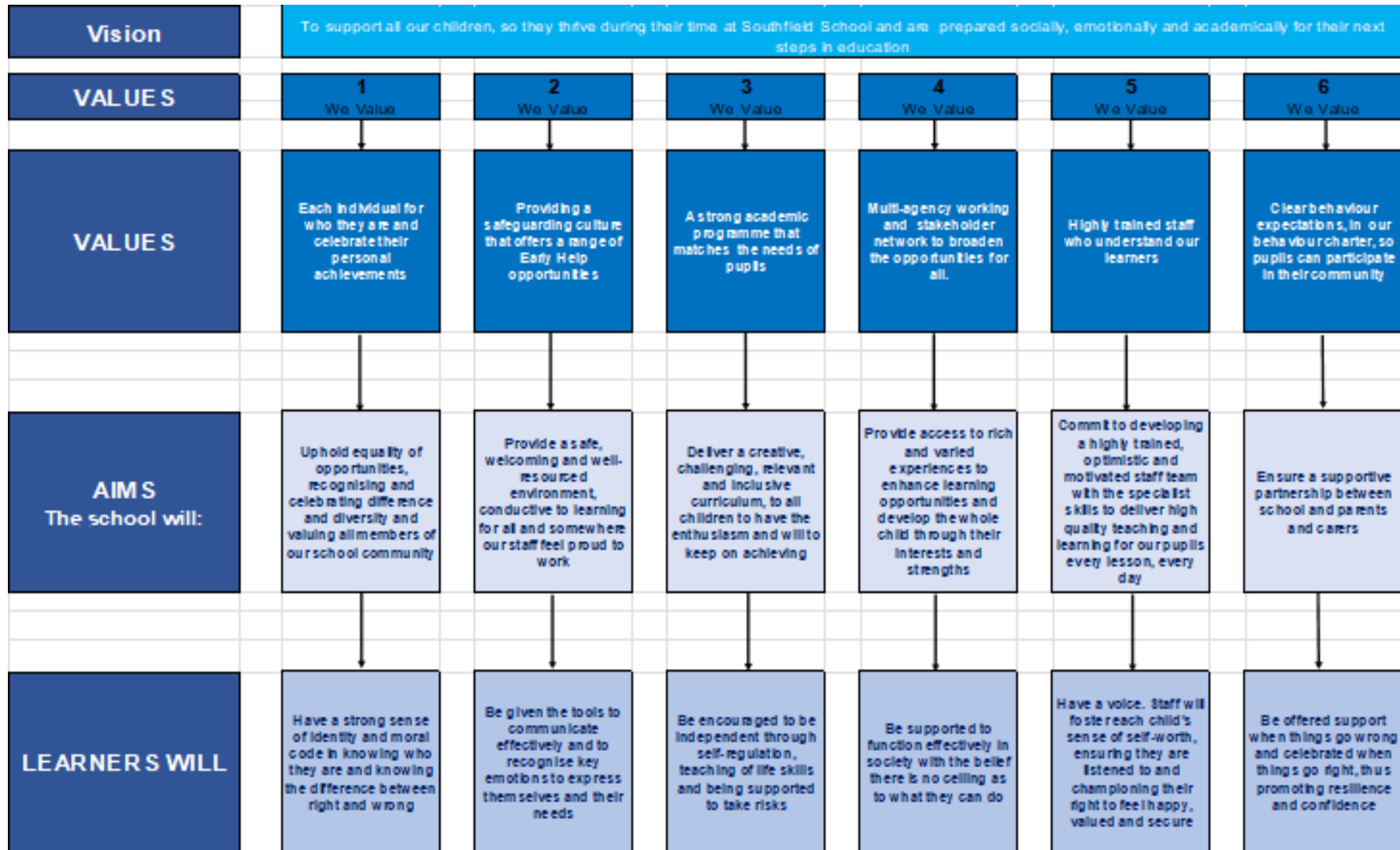


Angela O'Rourke

Headteacher



OUR VISION AND VALUES



SEN Teaching Assistant – Recruitment Advertisement

Job Title:	SEN Teaching Assistant	Grade:	Grade H3_5
Salary: £23,500.00		Location:	Southfield School Hatfield
Salary will be pro-rata as term time only: £15,494.98		Start Date:	September 2024
Closing Date:	27th October 2024	Interviews:	TBC

Southfield is a primary school for approximately 80 pupils with Learning Difficulties, which include, Autism, Speech Language and Communication Needs, Global Developmental Delay, and other conditions. Our new build is due for completion in taking our numbers up to 100 pupils. Due to this we are looking to expand our team of teaching assistant.

Admissions are via the Local Authority, and the present criteria is that children are accessing learning approximately 34-50% below their chronological age. We follow the EYFS and Key Stage 1 National Curriculum and adapt these to meet the individual interests and needs of our pupils. We do this through a 3 Phase curriculum. Priority is given to communication, self-regulation, independence and functional Literacy and maths. We use a wide range of approaches and strategies to support learning, including multi- sensory communication, social stories, TEACCH and Hertfordshire Steps. We also work with a range of other professionals, from advisers in the Local Authority to Therapists and social care colleagues. Access to sporting and creative arts organisations, provide a range of enhanced learning opportunities, both in school and the local area.

We are seeking to appoint a highly motivated Teaching Assistant, preferably with SENexperience, who would love the opportunity to make an impact on the teaching and learning at Southfield school.

The successful candidate will work in small classes of children who are not yet working atage related expectations. All pupils have an EHCP, which often states a diagnosis of Autism and associated Speech, Language and Communication needs. Children may demonstrate challenging behaviors.

Southfield school is ambitious and committed to the personal development of all staff. There are excellent opportunities for high-quality CPD and we are keen to support you inyour development.

In return, you will benefit from working with a dedicated team of staff focused on deliveringoutstanding learning. You will be actively encouraged to give your input, as we make significant improvements within the school.

Visits to the school for potential candidates are warmly welcomed. Please contact theschool Office to book an appointment.

Southfield School is committed to safeguarding and promoting the welfare of students and expects all staff and volunteers to share this commitment. We are also committed to the equality of opportunity for all. Applicants for this post must be willing to undergo child protection screening, including reference checks with previous employers and the Disclosure and Barring Service. We will also complete online social media checks.

Employee Benefits

Working at Southfield School is more than just a job – it's a career with meaning, and whether you are working directly with our young people or in a supporting role, the work you do ultimately helps to change lives.

We recognise that our employees are the key to helping us achieve our ambitions and deserve to be valued and supported.

Our rewards and benefits include:

- 24 hour employee assistance programme for advice, information and support
- Access to the Local Authority Employee Benefits and Discount Platform
- Local Authority Cycle to Work Scheme
- Long Service Awards
- High quality training offered through face to face, virtual and through various providers free of charge.
- Free care parking on site
- Contribution towards staff uniform
- Free refreshments and staffroom area
- Tax relief may be available on staff uniform.
- Staff recognition scheme
- Termly staff raffles
- Highly supportive team environment
- Support with career progression
- Pension Scheme – Please follow the link for further information regarding Teacher Pensions and rates of contributions. www.lppapensions.co.uk