

Parkfields Middle School

to flourish, learn and grow

Teacher of Mathematics

Information Pack



We welcome applications from all suitably qualified people regardless of their race, sex, disability, religion/belief, sexual orientation or age.

Parkfields Middle School is committed to safeguarding and promoting the welfare of children and young people. This post is subject to an enhanced disclosure application to the Disclosure and Barring Service (DBS). CVs will not be accepted for any posts based in schools. We are an Equal Opportunities employer.



Teacher of Mathematics – MPS/UPS suitable for ECT

For September 2024, due to relocation, we are seeking a qualified teacher of Mathematics at this 9-13 middle school. If successful, you will teach Maths across the school but with an emphasis on KS3. The successful candidate will ideally be able to offer the subject to GCSE Level and will be joining a very successful Maths Department. This post offers an exciting opportunity for an early career teacher or for someone looking to broaden their experience in an innovative and high achieving school.

Parkfields has 470 children and includes a hearing inclusion provision. The school was inspected in March 2019 and was judged that it continued offering a high standard of education. This followed Outstanding gradings in 2008 and 2012 as well as a further Section 8 inspection in 2016.

We also offer:

- Engaging, friendly and well-motivated children
- A pedagogical focus
- A broad range of facilities
- A supportive working environment

Closing date: Friday 17th May 2024 at 9.00am. Interviews w/b 20th May 2024

Interested candidates are welcome to contact Mrs Louise Reynolds.

Email: lreynolds@parkfieldsschool.co.uk for further information or to arrange a visit

Applications should be made via My New Term

<https://mynewterm.com/jobs/109662/EDV-2024-PMS-05587>

Please note that earlier applications would be welcomed and shortlisted candidates may be interviewed before the closing date.

A warm welcome...

From Mr. James Hughes, Headteacher, Parkfields School

Dear Applicant,

Thank you for your interest in the post of Teacher of Mathematics at Parkfields. This post offers an excellent opportunity for someone looking to develop their career as part of a strong and supportive team.

Parkfields is a wonderful school where everyone works together to achieve the very best for all the pupils who attend and truly reflects our motto, Flourish, Learn and Grow. In staff we appoint, we look for that much undervalued quality of humanity, along with an acceptance that young people will always make a few mistakes – and that it is our job to ensure that they learn from them. Parkfields is part of The Pyramid Schools Trust.

Visits to the school are welcome and strongly encouraged. If you would like to arrange a visit, please contact the school office on 01525 872555 to arrange a suitable time and date.

A person specification and job description are included below. Please note that only candidates who fulfil the essential requirements will be shortlisted; therefore, please ensure you refer to the components of the person specification in your application form. You can find much more information about the school and our ethos, including a virtual tour and pupil interviews, on our website www.parkfieldsschool.co.uk

During the selection process, each candidate's fulfilment of the requirements will be evaluated using a variety of tools and the process will also include an assessment of your suitability to work with children. The School is committed to safeguarding and promoting the welfare of children. Any offer of employment will be subject to receipt of a satisfactory DBS Enhanced Disclosure, references and medical clearance.

Your current or previous employer will be contacted as part of the verification process. If you are short-listed, any discrepancies or anomalies in the information provided or issues arising from references will be taken up at interview.

If you have not heard from us by Tuesday 21st May 2024, please assume you have not been short-listed. May I thank you for your interest and wish you good luck in the future if you do not hear from us.

Yours sincerely

Mr. J L Hughes





Why work at Parkfields School?

Parkfields School is based in Toddington. The school benefits from modern facilities including spacious, light classrooms, all of which are fully equipped with smart screens or televisions. The school also enjoys science, sports, music, technology and arts facilities. Staff often remark that Parkfields is a great place to work. Staff retention is very high which we think reflects the supportive and friendly environment in which we work. The children are hardworking, capable and diligent. New staff to the school often remark that they enjoy working in an environment where children want to learn. The Ofsted inspection from March 2019 noted that pupils flourish in an environment that fosters their academic progress and broader social development exceptionally well.

Parkfields Middle School also offers staff:

- A friendly working environment
- Supportive and caring colleagues
- A positive attitude to staff well-being and mental health
- Preferential admission for qualified children of staff (some restrictions apply)

- Excellent opportunities for professional development
- Access to regular staff social events

Why work in Toddington?

Toddington is situated in rural Bedfordshire in the Chilterns Hills, which has been declared an 'Area of Outstanding Natural Beauty'.

Toddington has a variety of historic buildings dating from the 13th century onwards. The school is based on Park Road just up from the village centre. Toddington has a range of shops, sports facilities, walking trails, pubs and restaurants whilst being only 45 minutes away from central London and all that it has to offer.

Nearby Harlington has a train station offering fast and frequent commuting into King's Cross St Pancras. We are also within easy distance of the M1, A5 and Luton Airport.

The surrounding areas of Toddington are affordable places to live with many staff members commuting from Leighton Buzzard, Flitwick, Ampthill and Bedford and of course Toddington itself.

Mathematics at Parkfields

Introduction

Maths is an integral part of the life of the school and enjoys strong support from staff and children. The Maths department has achieved excellent results at both KS2 SAT level and KS3 and is looking for an enthusiastic, committed and suitably qualified teacher to join the team.

The pupils at Parkfields are setted on entry for Maths, allowing them all to achieve at their level and nurturing those who need extra support with smaller classes and more adult help. In addition to the specialist Maths teachers, there are other members of staff who have mathematical expertise who support and promote Maths learning across the school.



Accommodation and Resources

The Maths department is accommodated in the main building. There are 3 dedicated Maths rooms for Year 6, 7 and 8 with Year 5 being taught in their own block. Each room has an interactive Clevertouch screen and Maths equipment and iPads are available.

The current schemes of learning are based on the use of the White Rose Maths resources (premium access) in line with our Trust schools. This allows more time for teachers to think about the lessons' planning and delivery. Our departmental meetings are focused on teaching and learning and subject specific development promoted by the use of Mastery materials (NCETM), with the help of a Mastery specialist (HOD).

The staff in the Maths Department are a hardworking, friendly, dedicated and knowledgeable team who enjoy Maths and relish the opportunity to share their passion and really enjoy their teaching. Our belief is that a mixture of hard work, resilience and a healthy sense of humour lead to success and progress.

We aim to develop a love of the subject by growing confidence and offering the experience of success and progress, allowing pupils to reach their full potential and be ready for their future learning.

Mathematical Activities

The School has a reputation for excellence in its extra-curricular activities and Maths is no exception. There is great enthusiasm amongst the students for a range of opportunities on offer. This includes the use of *DrFrost Maths*, *Times tables Rockstars* and *Complete Maths-Tutor* (in year 6). The pupils are involved in UKMT Maths competitions and Maths Days with our Trust schools as well as Maths trips to the likes of Bletchley Park and SpyGames.

During the school year the department is involved in exciting Cross-Curricular days on various topics as well as having themed specialist Maths/English days for Year 5. Maths is also celebrated in the Headteacher's weekly celebration assembly with the school-wide timetables competitions results.





At a glance

1963

School
Founded

Staff years of
experience
working at
Parkfields:

659

Current staff
have worked
10+ years at
Parkfields: **17**

Number of children: **470**

Teaching staff: **27**

Support staff: **43**

Number of
Grade 1
Ofsteds in a
row: **4**

Staff
promoted
internally in
past 2 years:
6

Average number of
extra-curricular
clubs and societies
per term **40**

Residential trips:

Conover Hall, France, Cornwall,
Calshot, Skiing

Well-being:

Staff sport, Pilates, Quiz,
Tuesday Tea, Christmas
Party, Well-being Board,
Staff Tea and Coffee

Staff development:

– SCITT, ECT, Leadership
programmes, shadowing,
coaching, NPQs,
apprenticeships



The purpose of the selection process is to assess your suitability for the post and give both the panel and yourself an opportunity to gain further information before making a successful appointment. It is also an opportunity to seek clarification on information which you have provided on the application form and accompanying information. The interview will also assess your suitability to work with children and will include questions relating to safeguarding and promoting the welfare of children.

How to apply

To apply for this position, please visit

www.mynewterm.com

<https://mynewterm.com/jobs/109662/EDV-2024-PMS-05587>

Please note that only fully completed application forms will be considered. CVs will not be included in the short-listing process

Short-listing

Applications will be assessed based on the information provided on the application form; only those best fulfilling the criteria for the role and the person specification will be shortlisted.

Subject to the number of applications, short-listing may take place before the deadline for applications has passed.

If you have not heard from us within three weeks of the closing date, you can assume that your application is not being progressed on this occasion.

Interview

Short-listed candidates will be interviewed initially informally by a member of the senior team.

Candidates will also be given a tour of the School, and there will be a chance to meet members of the department informally.

The interview will also include a lesson sample for teachers or administration task for support staff.

Selected candidates will then be formally interviewed by the Head and other members of the School management team.

Sample Lesson

Teaching Candidates invited to interview in person will be expected to prepare and deliver a sample lesson of up to one hour, which will be observed by the Head of Department or Subject Leader. Details of the material to be covered will be sent in advance. Candidates are advised to avoid trying to cover too much in the lesson, but to have enough material to fill the time available: pupils at the school are of differing degrees of ability and will expect to be involved in lessons that challenge them.

Admin. Task

The interview process for support staff will include a skills test which is relevant to the role in which you are interviewing for. These will be completed using Google docs and Google sheets, which are very similar to Microsoft Word and Excel. We will provide the equipment needed for these tasks.

Job Description – Teacher of Mathematics

Qualified Teacher

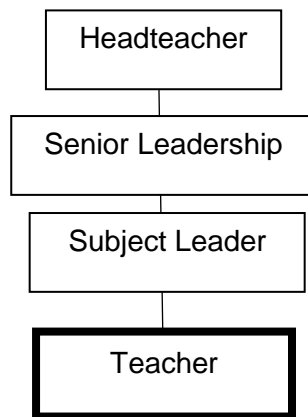
Responsible to: Subject Leader
Grade: MPS/UPS

This job description may be amended at any appropriate time, following consultation between the Headteacher and the Teacher, and will be reviewed annually. Priorities for the year will be negotiated and highlighted.

Core purpose of post:

- To provide a high quality educational experience for pupils
- To contribute to the delivery of the School Plan, supporting the Values based ethos, aims and vision of the school
- To impact upon educational progress beyond the teacher's assigned pupils.

Organisation chart:



Safeguarding Children and Young People

The SCHOOL is committed to safeguarding and promoting the welfare of children and young people. All staff and volunteers are therefore expected to behave in such a way that supports this commitment.

Appointment to this post will be subject to the following pre-employment checks:

- Health
- Identity
- Relevant work qualifications
- Right to work in the UK
- Professional Registration (for qualified teaching staff)
- Disclosure and Barring Service (DBS) (for all staff and volunteers)
- References (these will be sought before interview)

A start date for successful job applicants will not be confirmed until clearance from all the above checks has been obtained.

Please note that the DBS check will reveal ALL convictions, reprimands, cautions and bind overs even if considered as spent within the Rehabilitation of Offenders Act. As this post is a regulated activity, a DBS check is essential.

The department currently offers the following:

- An experienced, hardworking, committed and friendly team
- Opportunity for ongoing CPD
- Regular sharing of advice and expertise
- Professional working relationships with other schools in the Pyramid Schools Trust and beyond
- iPads and Chromebooks
- Clevertouch Screens
- Opportunities to extend Maths across the curriculum

The school is looking for the following:

- The ability to teach Maths throughout the school.
- Good curriculum knowledge of KS2 and KS3 (KS4 would be advantageous).
- A passion for Maths and a good degree in Maths, or closely related subject.
- Committed to projecting and maintaining the high profile of the Maths department throughout the school.
- Willingness to take a full part in extended-curricular activities, including day trips.
- Excellent organisational and administrative skills.
- IT skills and experience of using ICT in teaching is desirable.

Job purpose

To support the department and ensure high standards of teaching and learning; consider the well-being of both staff and children.

Accountabilities

- To encourage and support the learning of all children including our HIU pupils.
- To ensure the highest possible standards of behaviour.
- To promote positive values and attitudes.
- To demonstrate professional values and practice.

General duties and responsibilities

- To carry out the duties of a school teacher as set out in the *School Teachers Pay and Conditions Document* (detailed in paragraphs 1 to 8 below).
- To continue to meet the required standards for Qualified Teacher Status.

Knowledge and understanding

- Have knowledge of and keep up-to-date with the National Curriculum,
- Understand how pupils' learning is affected by their physical, intellectual, emotional and social development and understand the stages of child development.
- Select and make good use of IT skills for classroom and management support.
- Be familiar with the school's current systems and structures as outlined in policy documents including the Health and Safety and Child Protection policies.
- Understand and know how national and local comparative and school data including National Curriculum test data can be used to set clear targets for pupils' achievement.

Planning, teaching and class management

- Plan and deliver the teaching programme for all pupils within the class with regard for the school's aim statement, own policies and schemes of work.
- Provide clear structures for lessons and for sequences of lessons, which maintain pace, motivation and challenge.
- Make effective use of assessment information on pupils' attainment and progress and in planning future lessons.
- Ensure effective teaching of whole classes, groups and individuals, establishing high expectations of behaviour and attainment, so that teaching and learning objectives are met.
- Monitor and intervene when teaching to ensure sound learning and discipline and maintain a safe environment in which pupils feel confident.
- Use a variety of teaching and learning styles to keep all pupils engaged.
- Be familiar with the code of practice and identification, assessment and support of pupils with special educational needs.
- Evaluate your own teaching critically to improve effectiveness. Participate in INSET and CPD and share with others.
- Support the school's pastoral system, within the year group, class and with individual pupils.

Monitoring, assessment, recording, reporting and accountability

- Assess and record each pupil's progress systematically with reference to the school's current practice, including the social progress of each child and use the results to inform planning.
- Mark and monitor class work and homework, providing constructive feedback and setting targets for future progress.
- Provide reports on individual progress to the Headteacher and parents as required.
- Contribute to the school's performance management / appraisal process.

Other professional requirements

- Establish and maintain effective working relationships with professional colleagues and parents.
- Participate as required in meetings with professional colleagues and parents in respect of duties and responsibilities of the post.

- Be aware of the need to take responsibility for your own professional development.
- Maintain confidentiality at all times in respect of school related matters and prevent disclosure of confidential and sensitive information.
- Play a full part in the life of the school community, supporting the ethos of the school, and encouraging staff, parents and pupils to do likewise.
- Comply with school policies and procedures in areas such as assessment, marking, behaviour management, communication with parents, teaching English as an additional language, cover, induction, planning, staff meetings, parental events and code of conduct (Policy 31) in its entirety.
- Undertake any other duties of a similar level and responsibility as may be required by the Headteacher.
- Paragraphs 1 to 8 below are a Main Pay Range Teachers Responsibilities as set out in Part 6 Contractual Framework for Teachers of the School Teachers Pay and Conditions Document 2013, and as may be amended by subsequent Documents.
- Main Pay Range teachers are required to act in accordance with the school's ethos, policies and practices, under the direction of the Headteacher: If you are an Upper Pay range teacher, you will be required to be highly competent in all elements of the Teacher Standards, to ensure that your achievements and contribution to the school are substantial and sustained and to ensure that you discharge the "Accountabilities" under paragraph 9. If you are paid at the maximum of the Upper Pay Range see the additional "Accountabilities" in paragraph 10.

1. Teaching

- 1.1 Plan and teach lessons and sequences of lessons to the class(es) you are assigned to teach within the context of the school's plans, curriculum and schemes of work in order to achieve target levels of pupil attainment, progress and outcomes.
- 1.2 Assess, monitor, record and report on the learning needs, progress and achievements of assigned pupils to secure good progress in the subject.
- 1.3 Set and mark work to be carried out by the pupils in school and elsewhere.
- 1.4 Participate in arrangements for preparing pupils for external examinations.

2. Whole school organisation, strategy and development

- 2.1 Contribute to the development, implementation and evaluation of the school's policies, practices and procedures in such a way as to support the school's values and vision.
- 2.2 Work with others on curriculum and/or pupil development to secure co-ordinated outcomes.
- 2.3 Supervise and so far as practicable teach any pupils where the person timetabled to take the class is not available to do so. (You will not be required to provide such cover for more than 38 hours in any school year.)

3. Health, safety and discipline

- 3.1 Promote the safety and well-being of pupils in accordance with the school's Child Protection and other relevant policies.
- 3.2 Maintain good order and discipline among pupils in accordance with the school behaviour policy.
- 3.3 Follow the Staff Code of Conduct (Policy 31) in its entirety.

4. Management of staff and resources

- 4.1 Direct and supervise support staff assigned to you and, where appropriate, other teachers.
- 4.2 When required, to contribute to the recruitment, selection, appointment and professional development of other teachers and support staff.
- 4.3 Deploy resources delegated to you in accordance with school policies.

5. Professional development

- 5.1 Participate in arrangements for the appraisal and review of your own performance and, where appropriate, that of other teachers and support staff.
- 5.2 Participate in arrangements for your own further training and professional development and, where appropriate, that of other teachers and support staff including induction.

6. Communication

- 6.1 Communicate with pupils, parents and carers in accordance with the school ethos, policies and practice.

7. Working with colleagues and other relevant professionals

- 7.1 Collaborate and work with colleagues and other relevant professionals within and beyond the school.

- 7.2 Participating in administrative and organisational tasks, including the direction or supervision of persons providing support for the teachers in the school, which require the exercise of your professional skills and judgment.

8. Fulfil wider professional responsibilities

- 8.1 Make a positive contribution to the wider life and ethos of the school.

9. Upper Pay Range Accountabilities

- 9.1 Contribute significantly, where appropriate, to implementing workplace policies and practice and to promoting collective responsibility for their implementation.
- 9.2 Have an extensive knowledge and understanding of how to use and adapt a range of teaching, learning and behaviour management strategies, including how to personalise learning to provide opportunities for all learners to achieve their potential.
- 9.3 Have an extensive knowledge and well-informed understanding of the assessment requirements and arrangements for the subjects/curriculum areas you teach, including those related to public examinations and qualifications.
- 9.4 Have up-to-date knowledge and understanding of the different types of qualifications and specifications and their suitability for meeting learners' needs.
- 9.5 Have a more developed knowledge and understanding of your subjects/curriculum areas and related pedagogy, including how learning progresses within them than a Main Pay Range teacher.
- 9.6 Have sufficient depth of knowledge and experience to be able to give advice to colleagues on the development and well-being of children and young people.
- 9.7 Be flexible, creative and adept at designing learning sequences within lessons and across lessons that are effective and consistently well-matched to learning objectives and the needs of learners and which integrate recent developments, including those relating to subject/curriculum knowledge.
- 9.8 Provide coaching and mentoring to other teachers, give advice to them and demonstrate to them effective teaching practice in order to help them meet the relevant standards and develop their teaching practice.

10. Additional Accountabilities for the Maximum of the Upper Pay Range

In addition to the requirements of a Main Pay Range teacher and an Upper Pay Range teacher, teachers paid at the maximum of the Upper Pay Range are required to ensure that they:

- 10.1 Play a critical role in the life of the school.
- 10.2 Provide a role model for teaching and learning.
- 10.3 Make a distinctive contribution to the raising of pupil standards.
- 10.4 Contribute effectively to the work of the wider team.
- 10.5 Take advantage of appropriate opportunities for professional development and use the outcomes effectively to improve pupils' learning.

Person Specification – Teacher of English

Essential	Preferred	Source
Professional Qualifications and Training		
<ul style="list-style-type: none"> • A degree including Qualified Teacher Status • Recent relevant CPD • DBS Clearance 	<ul style="list-style-type: none"> • Degree level qualification in Maths • Further professional qualifications • A good Honours degree 	<ul style="list-style-type: none"> • Certificate provided at time of interview
Experience		
<ul style="list-style-type: none"> • Experience of teaching Maths to primary or secondary phase • A record of excellent classroom practice ensuring all abilities achieve their potential • Involvement in the implementation of whole school initiatives • Experience of effective involvement of parents in their children's education • Successful implementation of quality assessment techniques to inform teaching and learning • Experience of involvement in transition between year groups and Key Stages 	<ul style="list-style-type: none"> • Experience of teaching Maths in middle school setting • Evidence of high pupil achievement • Successful experience working with children from a range of backgrounds and ethnic groups and with a variety of learning needs 	<ul style="list-style-type: none"> • References • Application
Knowledge, skills and abilities		
<ul style="list-style-type: none"> • Thorough knowledge of curriculum related documents • Knowledge of child development • Knowledge of current developments in maths education • Knowledge and understanding of the role of a maths teacher • Knowledge and understanding of the school's ethos, vision and general policies e.g. behaviour, safeguarding • An understanding and willingness to reflect and review own performance • Very good oral and written communication skills • Ability to plan, organise, review and adapt 	<ul style="list-style-type: none"> • Direct experience of a school that shares a similar ethos, vision and general policies • Ability to offer other skills (e.g., sport, music, dance, art) that will enhance the ethos of the school. 	<ul style="list-style-type: none"> • Application • Teaching observation • Interview
Personal qualities		
<ul style="list-style-type: none"> • The necessary skills to plan, prepare, assess and keep records effectively • The skills required to help raise standards • IT skills to enhance teaching and as a professional tool • A passion and drive for raising standards of teaching and learning • Positive, energetic, enthusiastic and resilient, thrives on challenge • A caring, compassionate and supportive attitude towards all children and a commitment towards meeting the needs of children of all abilities • Ability to maintain confidentiality • Commitment to personal and professional development • Commitment to whole school improvement • Evidence of consistent teaching and learning • Team player • Self-motivated, enthusiastic and committed • High expectations and professionalism • Well organised • Willingness to undertake appropriate training • Committed to inclusion and equal opportunities for all • Ability to work effectively and flexibility both independently and as part of a team and meet deadlines • An ability to communicate effectively with parents and other members of staff both orally and written 	<ul style="list-style-type: none"> • Advanced IT skills to enhance teaching and as a professional tool • Clear about CPD needs; willingness to undertake appropriate training • Experience of leading an area of the curriculum • A good understanding of work life balance and how to achieve this 	<ul style="list-style-type: none"> • Interview • Teaching observation • Application • References
Other		
<ul style="list-style-type: none"> • Clear educational vision • Committed to school life beyond the classroom • Sense of humour 		<ul style="list-style-type: none"> • Application • Interview