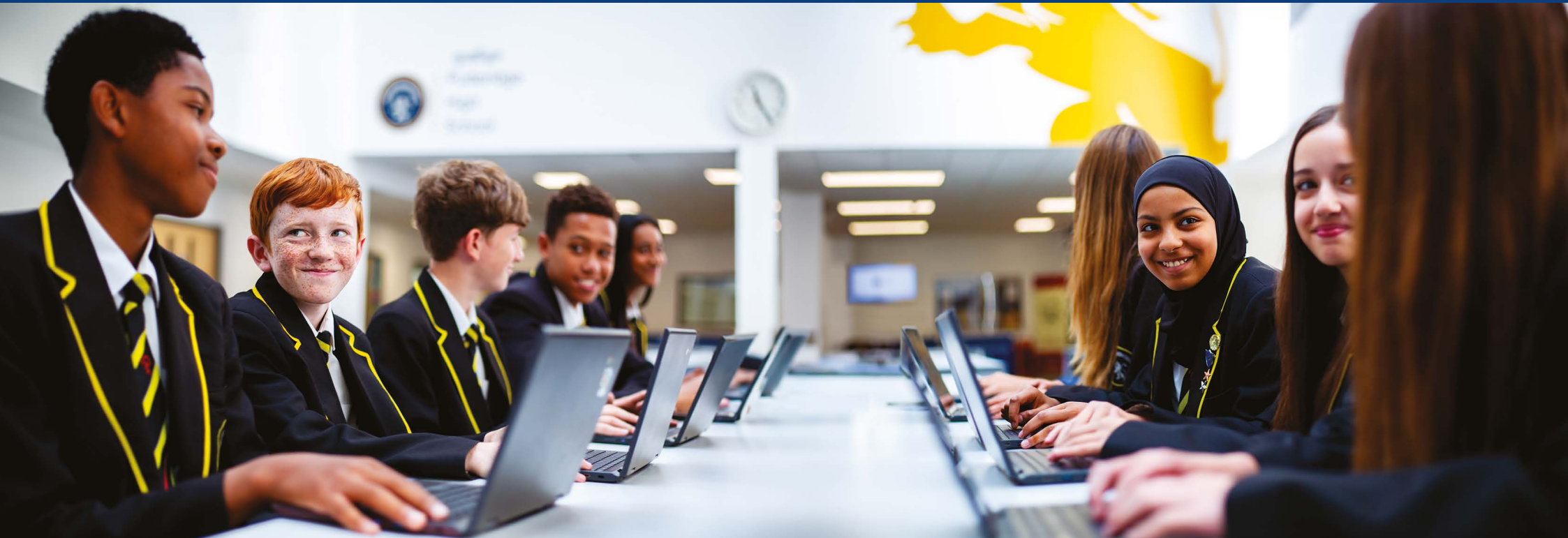




Putteridge
High
School



Building First Class Futures

...changing changes
...ing in pairs, think of the changes that occur when moving into Y
... your ideas on post-its and stick them on the board deciding if th
...ve or negative changes:

POSITIVE
CHANGES

NEC
CHA S



“Leaders have worked tirelessly to establish a culture where pupils feel they can succeed”

OFSTED 2019

Welcome to

Putteridge High School

It is with a real sense of pride that I welcome you to our school. This brochure gives you a flavour of Putteridge High School however nothing can replace the experience of joining us and visiting the school in person.

Our children are our world and as a parent of three children I understand the importance of keeping students safe, allowing them to develop as individuals and encouraging them to follow their passion in life. Supported by our exceptional facilities, we provide opportunities for all, with a philosophy that is based on creating an atmosphere that allows students to become confident, independent and creative learners. Putteridge High School provides a First Class education where all students are encouraged, supported and given a wide range of opportunities to enjoy and excel.

We aim to excite young people to learn and celebrate their successes. Our staff have a passionate commitment to inspire through excellent teaching. We welcome students of all abilities who are taught in both mixed ability and set groups. Excellent provision is made for all students including those who have exceptional gifts and talents as well as those who have a particular special educational need. There is no limit to what our students can achieve with self-belief, strong home support and no ceiling on what we can accomplish together.

I am inspired by our students and am in no doubt that Putteridge High School is a very special place, supported by a remarkably talented group of staff making a vibrant and diverse community.

Mr David Graham
Headteacher



Joining

Putteridge High School



Putteridge High School is a unique community school, based on the Hertfordshire/ Bedfordshire border. We are part of the Chiltern Learning Trust; a family of schools working in collaborative partnership. We are incredibly proud of our First Class ethos enhanced by the exceptional learning environment our brand new building provides.

Students settle into Putteridge quickly, benefitting from outstanding care and pastoral support. Staff work hard to ensure students are placed with a combination of friendly faces, as well as encouraging new friendships.

Prospective students are visited by a member of our Senior or Pastoral Team to provide support and advice on making a smooth transition to Putteridge. The safety, well-being, enjoyment and achievement of all within our community is key to ensuring that our students leave us as healthy, respectful citizens ready to make their way successfully and safely through their adult lives.

Safeguarding procedures are integral to the day to day running of the school and all members of staff play an important role in ensuring that every student has a First Class experience to meet their individual needs. We have an exceptional mental health and wellbeing offer to ensure students that require support feel happy, settled and safe.



First Class: Citizenship • Learning • Aspirations • Standards • School of Choice

“Pupils have flourished in the welcoming, inclusive, nurturing environment that leaders have created”

OFSTED 2019





**“The school’s work to
promote pupil’s personal
development and welfare
is outstanding”**

OFSTED 2019

Inside

The Classroom

At Putteridge High School we believe in the importance of an ambitious, language rich curriculum that develops articulate learners. Literacy and oracy skills are integral and are underpinned by the explicit teaching of a rich, varied and technical vocabulary.

Our curriculum engenders independent students who are active readers, effective writers and confident speakers.

Our community school ethos and commitment to British values permeate a curriculum that ensures our students leave us as healthy, respectful citizens who are ready to make their way successfully and safely through their adult lives.

In addition, our curriculum allows students to experience a diverse range of cultures; it makes heard the voices of people of colour and celebrates their achievements.

We enrich our learners with a breadth of knowledge, as well as opportunities and experiences, both in the local community and beyond in order to help them become positive global citizens.

The First Class quality of education we provide drives academic and personal excellence; our structured and sequenced curriculum instils our students with limitless aspirations and the skills and knowledge to achieve them.



Beyond The Classroom



Education is not simply about academic success; it is about participation and achievement that goes beyond the classroom. In its broadest sense, it is about preparing our students for life after school; about helping them to be successful, valued citizens that are engaged, challenged and achieve their full potential. We recognise that co-curricular activities play a crucial role within this development. Our school has a First Class reputation for the quality and range of co-curricular activities that we offer.

Sport, Music, Art and Drama are enjoyed by many students at PHS. We take great pride in our incredible music showcases and drama productions that display the skills, creativity and flare within the creative arts. We also have an extensive range of sporting after school co-curricular activities and in previous years, our PHS teams have successfully represented us across many areas. In addition to this, we are supported by a committed team of peripatetic music teachers from the Luton Music Service and individual tuition is a feature of music provision. In this way we hope to ensure that all children are encouraged to develop the confidence to create, perform and excel within their sporting, musical and dramatic endeavours.


At Putteridge High School, we have an extensive programme of visits, trips and activities organised each school year. Curriculum related trips to museums, art galleries and field studies are organised regularly. We also offer residential visits both domestically and abroad giving our students the opportunities to engage in discourse with others, whilst being immersed in their culture. By extending the curriculum in this way, students are able to learn cooperatively in exciting environments, making memories and expanding their personal and social development.

First Class: Citizenship • Learning • Aspirations • Standards • School of Choice

“Strong relationships between staff and pupils provides an effective basis for learning. There is a positive atmosphere for learning in classrooms”

OFSTED 2019



A photograph of four school pupils in uniform walking on a modern staircase. In the foreground, a girl and a boy are walking towards the camera, smiling. They are wearing dark blue blazers with yellow piping and a circular school crest on the left chest. The girl is wearing a grey skirt and a striped tie, while the boy is wearing grey trousers and a striped tie. In the background, two more pupils, a boy and a girl, are walking up the stairs. The staircase has a glass and metal railing. The background shows a bright, modern building interior with large windows and a blue sky visible through the glass.

**“Pupils are happy,
well cared for and
respect each other’s
differences”**

OFSTED 2019

The Putteridge Community

We are greatly encouraged by the enthusiasm that students generate when committing their time and talents to helping others. The strong House ethos enables students to contribute to a variety of nominated charities, raising considerable sums of money each year as a result of their hard work and inspiration. Students have the opportunity to apply for leadership positions within their House to lead on projects and further develop links within the local community. This develops a strong sense of gratitude and moral understanding of the wider community on a local, national and also global scale.

We also have strong links with local primary schools in the community. Our students impress year on year with their strong character and leadership while delivering assemblies and workshops to the younger generation. We regularly visit local primary and secondary schools to work collaboratively with other professionals and students in many areas such as

delivering language lessons, PE, sport coaching and life skills workshops. This is an example of one of the many ways we develop students' public speaking and interpersonal skills to ensure we are encouraging the development of global citizens.

The school regularly welcomes visitors from the local and wider community; their contributions to work in classrooms, their involvement in assemblies and their work with teachers are all greatly valued. Events such as Industry Days, Citizenship Days and Work Experience, encourage students to work with visitors from the world of industry and commerce developing high aspirations and ambition amongst our students. Both the school community and individual students continue to be enriched by visitors, whose involvement encourages students to broaden their contacts with members of the wider community and beyond.



Putteridge High School

Putteridge Road
Luton
LU2 8HJ

T: 01582 415 791

E: centraladmin@putteridgehigh.org

W: www.putteridgehigh.org



CHILTERN
LEARNING
TRUST