



Northstowe

Sixth Form College



“Where we  
*know* you and  
*value* you”



Post 16 Information 2025/26

## Welcome to Northstowe Sixth Form College

### **We are really pleased that you are considering Northstowe Sixth Form for your next step.**

Choosing your Post 16 place of study is an important decision, you need to find the place where you feel that you fit the best.

Our specialist built sixth form centre, which will open in February 2025, is built for 400 students, 200 in each year group. This year, 2024, we started the sixth form with 50 students in year 12. Whilst we hope that many of our current students will stay with us, our Sixth Form is open to any student who fulfils the entrance requirements for the courses they wish to study, and we look forward to welcoming students from beyond our main school catchment area.

### **We would very much like you to be one of the 100 students that join us in Sept 2025.**

Whilst we are a new sixth form in Cambridgeshire, we have been building expertise and skills by recruiting sixth form specialist teachers and we have on our staff three ex-Heads of sixth forms. So, whilst our Northstowe sixth form is new in design, students and buildings our staff are very well versed in sixth form teaching, pastoral care and delivering successful outcomes.

### **If you come to Northstowe Sixth Form 'We will know you and value you'.**

We pride ourselves on knowing our students and this will be at the heart of your Sixth Form experience. Knowledgeable and experienced subject teachers, who go the extra mile for you in your lessons, and a pastoral team who will be there to guide and support as well as celebrate your successes.

### **We will maximise your opportunities to grow as a person and prepare you for your next steps**

Whilst we are part of an all through campus, the Sixth Form experience will differ from the main school experience. With purpose-built facilities, separate eating and study spaces, and with most of your lessons taught in the Sixth Form block, you will feel like an adult. However, being on an all through campus will also give you lots of opportunities for leadership experiences and developing skills that will be useful when you are applying for university, apprenticeships or work.

Do have a look at our website, we have uploaded lots of information to help give you an idea of what Sixth Form in Northstowe looks and feels like. We are adding to it all the time, so do keep coming back. If you want to talk to us about the Sixth Form, do get in touch with us at [SixthForm@northstowe.education](mailto:SixthForm@northstowe.education).

Our new sixth form block opens in February and we look forward to inviting you to its opening.



**Dr Claire Mills** | Principal of Northstowe Learning Community



**Flip Toley** | Head of Northstowe Sixth Form College



**Northstowe**  
Sixth Form College

## Our Courses



**As a prospective Northstowe Sixth Form student you can select from a combination of A Level and technical courses to build your study programme. We believe that you can have 'Choice without Compromise'.**

You can choose to study 3 A Levels or mix A Levels with technical-vocational-courses. Each of our subjects is worth 60 credits and a level study programme must contain 180 credits. The only exception to this is the Diploma in Dance course which is 180 credits and stands alone as a technical qualification.

We do offer resits for those students who have not achieved at least a grade 4 in maths and English Language.

Alongside the academic study programme we also expect all students to choose one of four possible enrichment activities. These will be timetabled and the expectation is they will be part of every student's curriculum who chooses to study at Northstowe Sixth Form. We have purposely designed these enrichment activities to offer choice and breadth.

We also build into the curriculum an expectation that every student will take part, in year 12, in at least one week's work experience. We have a dedicated Level 6 qualified careers advisor who will be part of a team placing students in environments and workplaces designed to build their knowledge and skills ready for the wider world.

### **We believe that you should consider Northstowe sixth form because:**

- **We deliver focused pastoral support and mentoring: 'We will know you and value you'**
- **We will ensure that on average our class sizes will be no larger than 12 students**
- **We will work with you to create a bespoke and personalised curriculum**
- **We have specialised subject expertise in all areas of our sixth form curriculum**
- **We will offer opportunities for you to be part of a growing community both inside and outside the school. This means offering you opportunities to work with reception, primary school, and 11 to 16 students, national building companies, scientific and engineering organisations and local businesses.**



Scan here for  
all courses



## Why Northstowe 6th form?



*'I wanted a fresh start and it's a small College'*



*'Offers me the subjects I wanted'*



*'I didn't want the commute, and the drive into Cambridge. Longstanton bus stop is only a short walk away'*



*'I've found it very good, and I am really enjoying all my time here'*



*'I like how the respect goes both ways. I also like the responsibility that we're receiving.'*



Scan here for  
all courses



# Courses - Choice without compromise

## A Levels

We offer a range of advanced level subject qualifications, including 7 facilitating subjects. Our A levels lead to university, training, further study or employment.

### Biology



### Chemistry



### Physics



### Health and Social Care



### Performing Arts



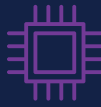
### Further Maths



### Maths



### Computer Science



### Dance



### Applied Science



### English Literature



### Geography



### History



Extended Diploma in Dance, equivalent to 3 A-levels, will require an audition.

## GCSEs

Maths and English GCSE classes for those who require a resit or are aiming for a higher grade.

### Product Design



### Psychology



### Sociology



### Art and Design



### Business and Economics



### Modern Foreign Languages



### Maths



### English Language



## Our Entry Requirements

**Standard entry requirements are 5 GCSE subjects at a minimum of a grade 5 or equivalent including English and maths.**

To study A Level facilitating subjects – biology, chemistry, physics, computer science, English Literature, geography, history - standard entry requirements are needed plus a minimum grade 6 at GCSE for the relevant subject.

For maths and further maths, at A level, you will need the standard entry requirements and a grade 7 in GCSE maths.

Subject choices will be considered on an individual basis if they require a maths or English Language resit.

Scan here for all courses



# Choice without compromise



*'The expectation will be that each student will have the opportunity to choose at least one of these activities'*

"Where we *know* you and *value* you"

## EPQ

EXTENDED PROJECT QUALIFICATION. (AQA)

Where you are able to develop further an interest you have outside of lessons or from a topic you are interested in. You produce a report answering a question on your chosen area. Alternatively you may produce an artifact.

## DoE Gold

DUKE OF EDINBURGH GOLD AWARD

There are several sections to this award: Service/Community/Skills/ Expedition & residential. You can take part in this demanding course without having completed the DofE Bronze or Silver Award. We have our own school qualified Gold award instructor.

## Sports Leaders

LEVEL 3 AWARD IN SPORTS LEADERSHIP

A nationally recognised qualification. You can lead small groups of people in sport and recreational activities. The qualification teaches key leadership skills such as organisation, planning, communication and teamwork. It is fun and practical, which provides you the opportunity to work at local sports festivals, local clubs and primary schools.

## Core Maths

Core Maths is intended for students who have passed GCSE Mathematics at Grade 4 or better, but who have not chosen to study A Level Mathematics. It can be studied in a single year or over a two-year period and can be taken alongside A Levels or other qualifications, including vocational courses.



**Northstowe**

Sixth Form College

*Choice without compromise*

**You should consider Northstowe Sixth Form**

**The new dedicated 6th form specialist teaching block** opens in February 2025 where you will be part of but separate from the main school.

**Northstowe Sixth Form is located on the guided bus route** with new roads linking Northstowe with Bar Hill and you will not need to commute into Cambridge or join the long lines of students waiting for the guided bus. You can also cycle or walk on dedicated cycle paths and walkways,

**You will be part of Meridian Trust who operate other 6th forms across Cambridgeshire** and you can attend joint 6th form events such as maths workshops, geography lecture series and science competitions. You can work online or face

to face with other sixth form students expanding your network and developing your skills.

**You will be offered work experience**, and we have links with the growing Northstowe business community, Cambridge Science park and if you are considering a career in teaching, social work or health then you could be offered opportunities on our campus. Northstowe Learning Community - NLC - comprises of a nursery, primary school, an 11-16 school and a Sixth Form. We also have Martin Bacon Academy, a special school, on the campus and you will have opportunities to offer help, support and kindness to others.

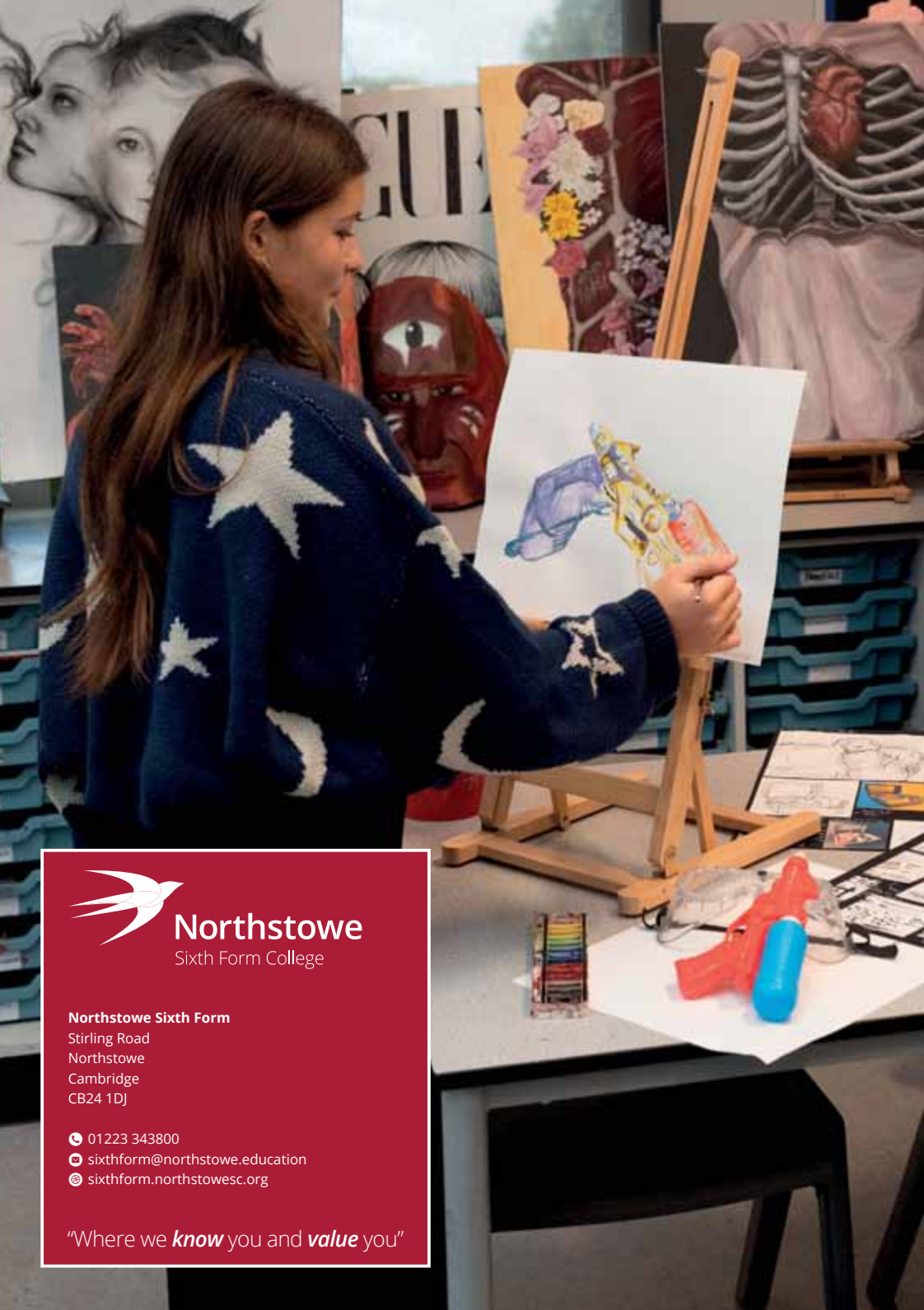
**We have a qualified mental health practitioners, career guidance professionals** and tutors who care about you, who will know your name and who will value you.



“Where we **know** you and **value** you”

Scan here for all courses





**Northstowe**

Sixth Form College

**Northstowe Sixth Form**

Stirling Road  
Northstowe  
Cambridge  
CB24 1DJ

- ☎ 01223 343800
- ✉ [sixthform@northstowe.education](mailto:sixthform@northstowe.education)
- 🌐 [sixthform.northstowesc.org](http://sixthform.northstowesc.org)

"Where we *know* you and *value* you"