



JOB DESCRIPTION

TITLE: Midday Supervisory Assistant

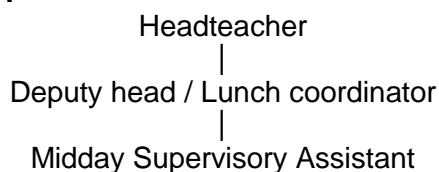
SCHOOL: Lady Zia Wernher School

RESPONSIBLE TO: Head teacher

GRADE: L1A

PURPOSE OF POST: Responsible to the Senior Midday Supervisory Assistant, and under the general direction of the Headteacher, during the midday break, ensure the safety and general welfare and proper conduct of the pupils during this period.

ORGANISATION CHART:



PRINCIPAL RESPONSIBILITIES:

%

1. Supervise pupils immediately before, during and after the midday break. This includes pupils who have a school meal as well as pupils who bring their own food.
2. Assist pupils as required with toileting and personal hygiene (under the general direction of the class team).
3. Assist with the lifting and handling of non-ambulant pupils in conjunction with other staff members, making use of mechanical aids as necessary.
4. Encourage and assist pupils in eating, cutting up food, providing guidance on the proper use of cutlery. Assist with the clearance of spillages as necessary.
5. Assist pupils in carrying/transporting trays to the tables and returning crockery to the food counter.
6. In the event of a pupil becoming ill, distressed, or experiencing an accident, provide initial aid and summon qualified assistance.
7. Wipe/wash pupils after meals and wash aprons, plastic bibs etc. as necessary.
8. Dress pupils for outside play activities and supervise pupils in the playground.

DIMENSIONS:**Supervisory Management:** None**Financial Resources:** None**Physical Resources:** None**Other:** Responsible for the safety and conduct for a specified number of pupils

CONTEXT: All support staff are part of a whole school team. They are required to support the values and ethos of the school and school priorities as defined in the School Improvement Plan. This will mean focussing on the needs of colleagues, parents and pupils and being flexible in a busy pressurised environment.

Because of the nature of this job, it will be necessary for the appropriate level of criminal record disclosure to be undertaken. Therefore, it is essential in making your application you disclose whether you have any pending charges, convictions, bind-overs or cautions and, if so, for which offences. This post will be exempt from the provisions of Section 4 (2) of the Rehabilitation of Offenders 1974 (Exemptions) (Amendments) Order 1986. Therefore, applicants are not entitled to withhold information about convictions which for other purposes are 'spent' under the provision of the Act, and, in the event of the employment being taken up; any failure to disclose such convictions will result in dismissal or disciplinary action by the Authority. The fact that a pending charge, conviction, bind-over or caution has been recorded against you will not necessarily debar you from consideration for this appointment.

Disclosures are handled in accordance with the DBS Code of Practice which can be accessed via www.disclosure.gov.uk

Physical Effort:

Required to lift and handle pupils and their walking aids (walking frames, buggies etc.)

Working Environment:

There could be a requirement to deal with vomit, food spillages and bodily fluids when children are unwell. Staff are required to support students with personal care on a daily basis. All staff work in teams and will be supported by colleagues when undertaking administration of medication or personal care for students.

Person Specification

This acts as selection criteria and gives an outline of the types of person and the characteristics required to do the job.

Essential (E) :- without which candidate would be rejected

Desirable (D):- useful for choosing between two good candidates.

Please make sure, when completing your application form, you give <u>clear examples</u> of how you meet the essential and desirable criteria.				
Attributes	Essential	How Measured	Desirable	How Measured
Experience	Demonstrable experience of working with children or young people.	1,2,5	Some experience of working with people with special educational needs.	1,2
			Experience of working in a school environment	1,2
			Some experience of performing basic cleaning	1,2
Skills/Abilities	Able to encourage, coach and support children with special educational needs.	1,2,5		
	Able to follow guidelines and procedures.	1,2,5		
	Able to work effectively as part of a team.	1,2,5		
	Able to work on own initiative.	1,2,5		
	Able to converse with ease with members of the public and provide effective help or advice in accurate and fluent spoken English	1,2,5		
Competencies	Able to demonstrate appropriate motivation to work with young people.	1,2,5		
Equality Issues	Able to recognise and act on discrimination.	1,2,5		
Specialist Knowledge	Able to demonstrate an empathy with and understanding of needs of children	1,2,5	Understanding needs of children with Special Educational needs particularly in relating to promoting independence in eating and self-care & hygiene	
Education and Training				
Other Requirements				

(1 = Application Form 2 = Interview 3 = Test 4 = Proof of Qualification 5 = Practical Exercise)

We will consider any reasonable adjustments under the terms of the Equality Act 2010 to enable an applicant with a disability (as defined under the Act) to meet the requirements of the post.

The Job-holder will ensure that Luton Borough Council's policies are reflected in all aspects of his/her work, in particular those relating to;

- (i) Equal Opportunities
- (ii) Health and Safety
- (iii) Data Protection Act (2018) & General Data Protection Regulations (2018)

The School is committed to safeguarding and promoting the welfare of children and expects all staff to share this commitment. Applicants must be willing to undergo child protection screening appropriate to the post, including checks with past employers and the Disclosure and Barring Service.

CVs will not be accepted for any posts based in schools.