

Watford: An exceptional place to live, work and learn!

Watford is a vibrant and thriving town with a long history of attracting people that recognise that it is an excellent place to live, work and do business.

A major transport hub

Watford is the heart of the commuter belt, with good rail connections (both overground and underground) to London. The school is situated approx. a 10 minute walk from Watford Junction Station. Watford is also linked directly to many of the UK's major towns and cities by road, including the M25 and the M1 motorways.

A growing town

Recently, The Telegraph revealed that Watford is the most in-demand tube stop for house buyers, with house prices being more affordable. There are large scale redevelopments, one of which is planned at Watford Junction which includes 1,500 new homes.

A vibrant community

Our amazingly diverse community includes Irish, Romanian, Polish, Lithuanian, Indian, African, Chinese, Pakistani, Italian, Spanish, New Zealanders.... the list is endless. We serve a large proportion of EAL families who range from little or no English to bilingual.

A great place to learn

Watford schools are rated as good, but are oversubscribed. St John's Church of England Primary School is the third Free School in the area and the only Church of England school in the town.

Watford is a great place to learn and has great facilities right on the school's doorstep, including Watford Leisure Centre, Watford Central Library, The Colosseum, Watford Palace Theatre, Watford Museum, canals and many green open spaces.

It also hosts an amazing annual festival, Imagine Watford, which attracts national and international performance artists.

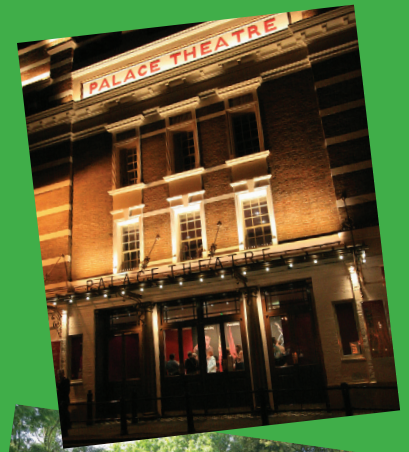
Also nearby are attractions such as the Natural History Museum at Tring, St Albans with the Cathedral and the Roman ruins and museum, The Henry Moore Foundations and Chiltern Open Air Museum to name but a few. Obviously, with trains running from Watford Junction to London in less than 20 minutes, we immerse our children in various cultural learning experiences.

What we can offer you

We believe that by the whole school community following our ethos of love, respect and value we will create a positive thriving environment where all can succeed. We view staff well-being as a priority, as we know that happy staff equals happy children. As St John's is such a new school, literally growing every day, the opportunities for staff are unique.

With the whole school embracing a growth mindset, there are opportunities for you to be actively involved in the school's development of the curriculum, the learning environments, the resources, patterns and routines. We also want to grow you as an individual, through ongoing professional development and future opportunities to develop into leaders.

We are committed to creating the best team possible to further the learning for our children with a warm supportive "family" feel, prepared for all challenges.





Love Respect Value

**“Your word is a lamp to my feet and a light to my path.”
Psalm 119v:105**